

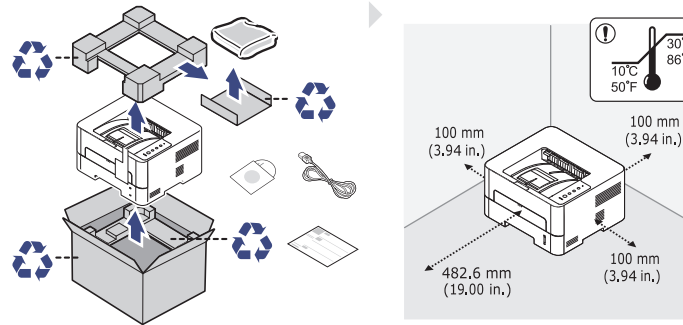
# MUST READ QUICK INSTALLATION GUIDE

Samsung Printer Xpress

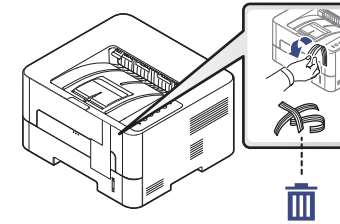
M262x series  
M282x series  
M283x series  
M301x series

Guide d'installation rapide

## PREPARING PRÉPARATION

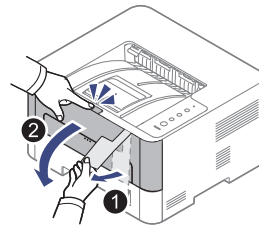


Detach / Détachez



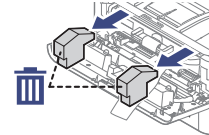
## INSTALLING THE TONER CARTRIDGE INSTALLATION DE LA CARTOUCHE DE TONER

Open / Ouvrez

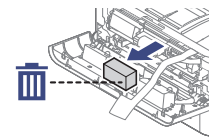


Remove / Retirez

M2620 series  
M2820 series  
M2830 series

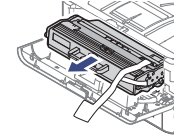


M2625 series  
M2825 series  
M2835 series  
M301x series

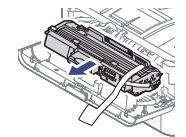


Take out / Sortez

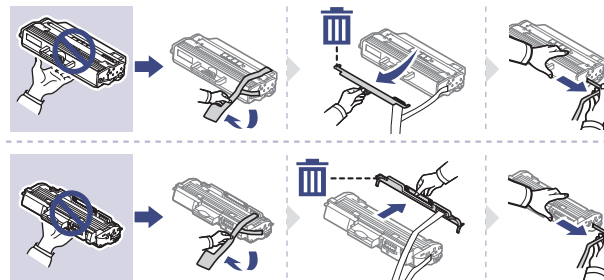
M2620 series  
M2820 series  
M2830 series



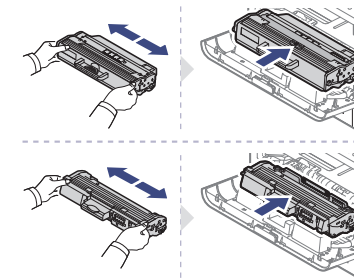
M2625 series  
M2825 series  
M2835 series  
M301x series



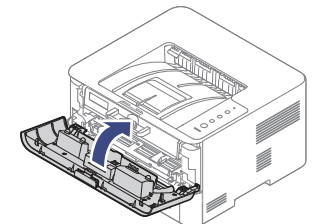
Remove / Retirez



Shake / Secouez & Insert / Insérez

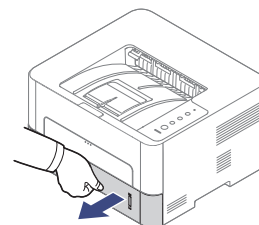


Close / Fermez

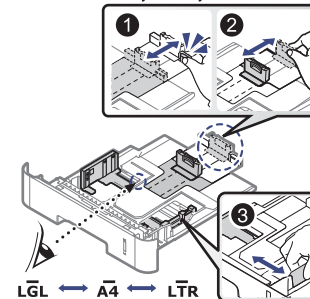


## LOADING PAPER CHARGEMENT DU PAPIER

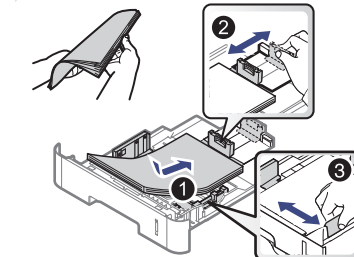
Open / Ouvrez



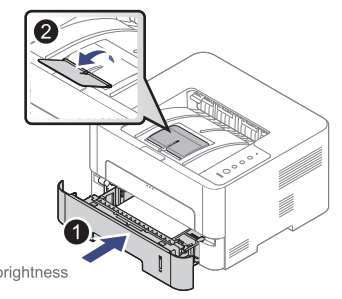
Adjust / Ajuster



Insert / Insérez



Close / Fermez



\* The illustration may differ from your machine depending on your model.

Selon le modèle, cette illustration peut différer de votre appareil.

Letter Xerox Business Multipurpose 4200 or 20lb, 92 brightness  
A4 Xerox Premier or 80g/m<sup>2</sup>, 92 brightness



JC68-03461A03

## CONNECTING POWER BRANCHEMENT DU D'ALIMENTATION

Power on / Marche



Wait a few seconds for the machine to warm up.  
Attendre quelques secondes que la machine sse réchauffe.

## INSTALLING SOFTWARE AND CHOOSING INTERFACE CONNECT TYPE

## INSTALLATION DU LOGICIEL ET SÉLECTION DU TYPE DE BRANCHEMENT DE L'INTERFACE

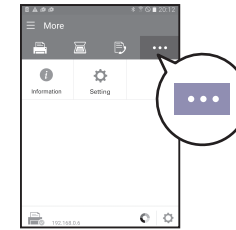
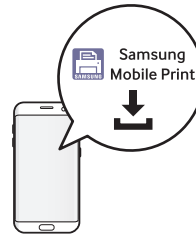
[www.samsung.com/printersetup](http://www.samsung.com/printersetup)



Windows only  
Windows uniquement



Easy wireless setup by app (Wireless model only).  
Configuration aisée sans fil au moyen de l'application (Modèles sans fil uniquement).



For detailed information about the wireless setup, refer to the User Guide.  
Pour des informations détaillées sur la configuration sans fil, veuillez-vous référer au mode d'emploi.

## VIEWING THE USER GUIDE

Be sure to read the safety guidelines in the User Guide.  
Veuillez à bien lire les directives de sécurité de guide de l'utilisateur.

## AFFICHAGE DU GUIDE DE L'UTILISATEUR

