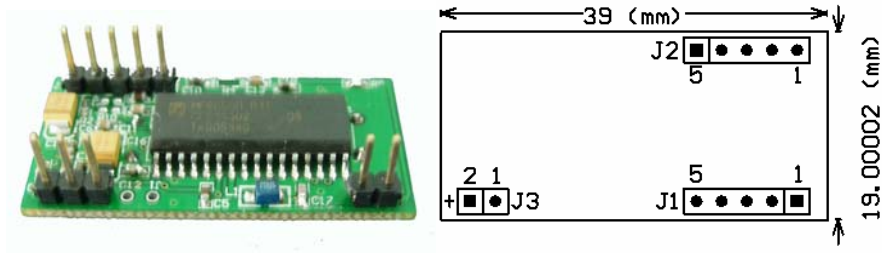


RDM880 Specification



1. Pin definition

J1:

- PIN 1 ---- LEDG
- PIN 2 ---- +5V (DC)
- PIN 3 ---- GND
- PIN 4 ---- LEDR
- PIN 5 ---- BUZ

J2:

- PIN 1 ---- RESET
- PIN 2 ---- RXD
- PIN 3 ---- TXD
- PIN 4 ---- GND
- PIN 5 ---- +5V (DC)

J3:

- PIN 1 ---- ANTENNA -
- PIN 2 ---- ANTENNA +

LED AND BUZZER:

LEDG – Green Control I/O Port (need to be installed peripheral circuit, control light status by users order)

LEDR – Red Control I/O port (need to be installed peripheral circuit, control light status by users order)

BUZ –buzzer controlled by use port (need to add circuit) buzzer working status can be controlled by users' order

2. Specification and Parameter:

Model No.	RDM880
R/W chip	MFRC500, MFRC400, MFRC531, MFRC632
Standard	ISO/IEC14443-A;ISO/IEC14443-B; ISO/IEC 15693
Support Card	Mifare One S50; Mifare One Ultralight; MifareOneS70;MifarePro;AT88RF020;66CL160S; SR176; SRIX4K; I-code2; TI RFID Tag-it HF-I,EM4135,EM4034
Frequency	13.56MHz
Baud Rate	9600-115200bit/s (configurable, default9600)
Power supply	DC5V(5%)
Current	<70mA
Operating range	30-100mm (reading range depend on antenna and card/tag)
interface	TTL electrical level/RS232
Working temperature	-10 degree to 70 degree
Storage temperature	-20 degree to 80 degree
Size	39*19*9 mm (DIP28)
Optional antenna(customized)	20*40mm 49*55mm 40*71mm 65*90mm 155*166mm(special, required customized)
Relative Provide	Provide SDK free, DEMO program